

# Day 4

## Word Work

- Spelling—Lost Letters

## Language

- Oral Vocabulary and Concept Development—resource, itinerant, self-contained

## Reading

- Reading and Comprehension—Continue to read or re-read “Lost at School”; Map Work

## Writing

- Creative Writing—Places at My School: Publish story
- Writing Grammar—Writing standard contractions

## Lesson 21 At School “Lost at School”

### Materials Needed:

- WS21-1 through WS21-11
- Word cards can’t, didn’t, don’t, isn’t, it’s, let’s, we’ll
- Braille Template (see Creative Writing, Day 1)

### Reading

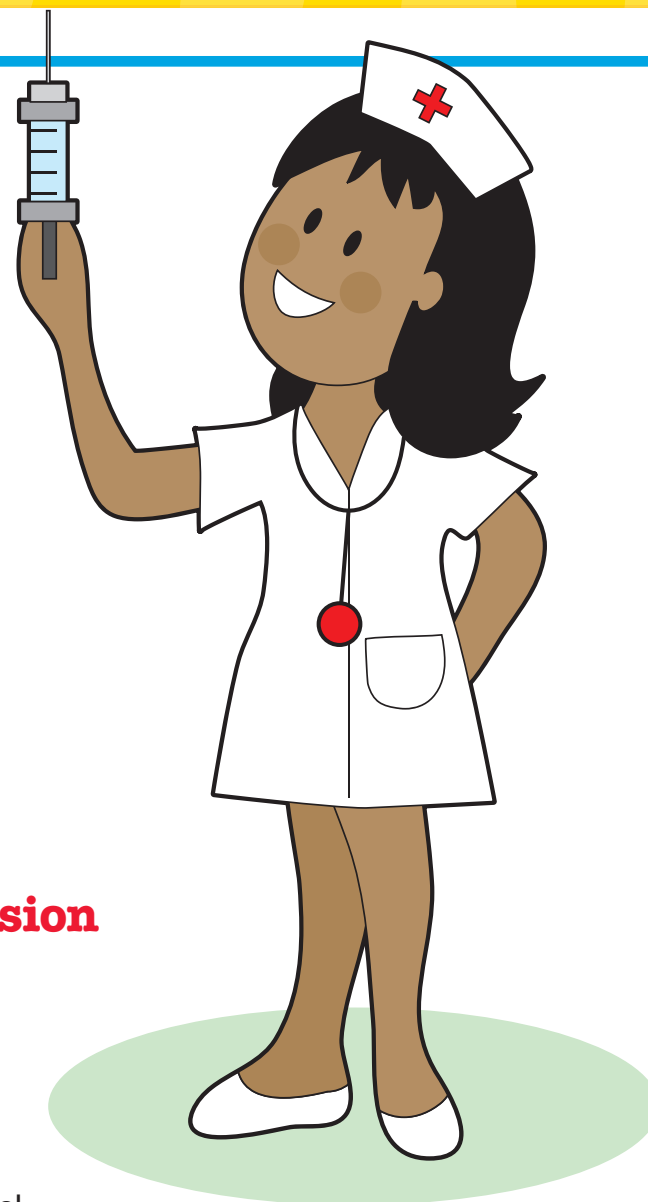


#### Reading and Comprehension

Orally review the previous day’s reading. Then continue to read or re-read the story.

**Map Work** Give the child WS21-7, a map of a school. Give him a few minutes to look at the map. Explain that this is a map of the school that Jeff and Liz attend. Then ask the following questions. Give help as needed.

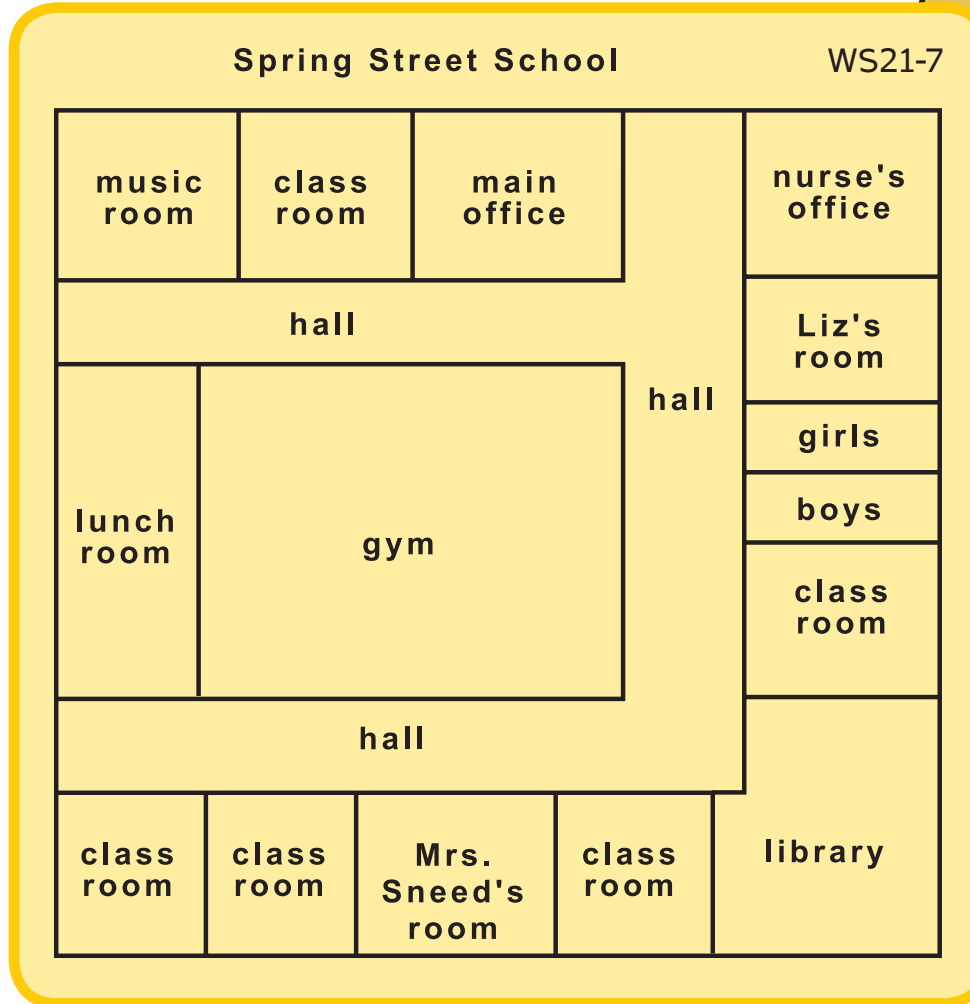
1. Find Mrs. Sneed’s room. (bottom center)
2. Find the nurse’s office. (top right)
3. How could Jeff go from Mrs. Sneed’s room to the nurse’s office? (He could go right past a classroom, turn left at the library, and go all the way down the hall to the last office on the right.)



4. Find Liz’s room. (Liz’s room is next to the nurse’s office on the right.)
5. How could Jeff go from her room to his room? (He could follow the hall to the library, turn right, and his room would be the second room on the left.)
6. Find the lunch room. (left center)
7. Find two ways to get to the lunch room from Liz’s room. (1. Go left out of her room to the end of the hall, turn right, go to the end of the hall, and turn right. 2. Go straight down the hall past the office to the end of the hall, and turn left.)
8. Find the restrooms. (right center)
9. What do the restrooms say on them? (boys and girls)
10. Find the main office. (top mid-right)
11. Who would you expect to find in the main office? (the secretary or administrative assistant and the principal or superintendent)
12. Find the library. (bottom right corner)
13. What could you do at the library? (read, listen to a story, check out books)
14. Find the music room. (top left corner)
15. What do people do in the music room? (sing, play instruments, attend music classes, or any other reasonable answer)
16. Find the big room in the middle of the school. (gym)
17. This room has a funny name. The name of the room has three letters and sounds like the name Jim, but starts with the letter g. Find the room, and tell how this gym is spelled. (g-y-m)
18. What do people do in the gym? (run, exercise, play games like volleyball and basketball, wrestle, or any other reasonable answer)
19. What are the areas that connect all of the other rooms called? (halls)
20. How many halls are there? (three, or one large, depending on how you count them)
21. Find three places where the halls could take you out of the school. (two by the lunch room and one by the main office)

**Notes**

### Notes



### Language



#### Oral Vocabulary and Concept Development

**resource, itinerant, self-contained** Discuss the following information with the student.